

PHASE 2 – FEASIBILITY ANALYSIS

RUMNEY ROAD

Rumney Road is a fairly long street (approximately thirty four hundred feet). The traffic flow is moderate to heavy depending on the time of day. Many vehicles use Rumney Road as a cut through to Malden Street, to avoid the intersection at Malden and Revere Streets. Also twelve streets branch off of Rumney and in some instances residents use Rumney Road to access their street.

Moderate alligator cracking can be found in the center of the road (see attached photos). Additional alligator cracking is evident along the gutter line on both sides of the roadway and could be signs of street settlement (refer to photos). Rumney Road is a candidate for rehabilitation.

Due to the length of the road the existing conditions vary greatly.

The section of Rumney Road from Broadway to Patriots Parkway has asphalt sidewalks and granite curbing. The asphalt sidewalks are in poor condition and should be replaced. The granite curbing requires removal and re-setting (refer to photos).

From Patriots Parkway to the terminus at Malden Street there is neither any formal sidewalks nor any granite curbing (see photos).

It's our opinion that the financial cost to install new concrete sidewalks and lay down new granite curb, from Patriots Parkway to the terminus at Malden Street would be prohibitive. Further, the residents on the street may not desire curbing or sidewalks in front of their properties. A site meeting with the Administration should be scheduled to discuss the variety of issues surrounding the potential reconstruction of Rumney Road.

Our initial recommendations include;

1. Mill and pave roadway
2. From Broadway to Patriots Parkway remove the existing asphalt sidewalks and replace with concrete sidewalks. Remove and re-set curbing within this stretch of road.

Rumney Road

Near Broadway looking West.

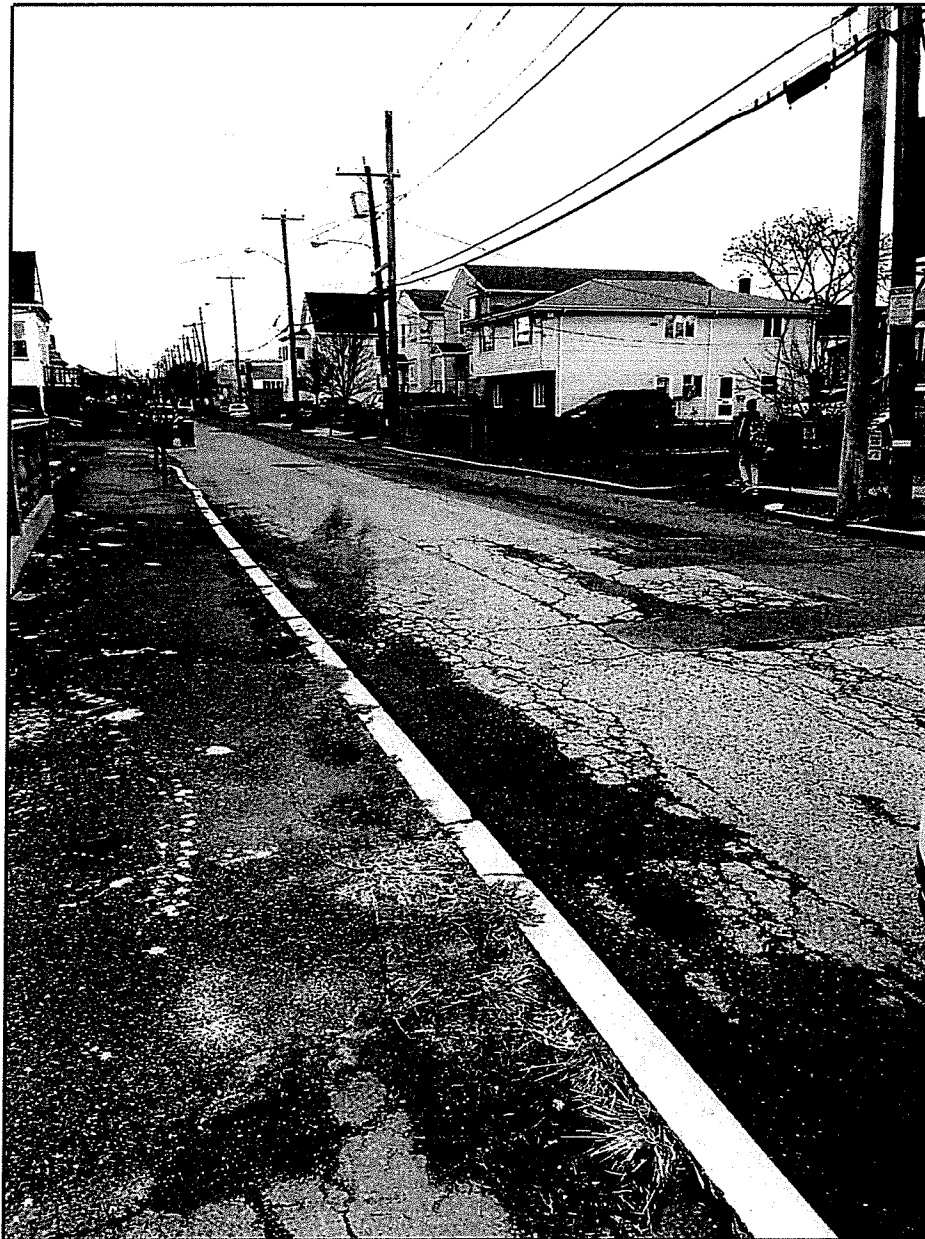
This section of Rumney has granite curb and asphalt sidewalks. Condition of road, curb and sidewalk are poor / very poor.

Where granite curb exists, curb should be reset and sidewalks reconstructed in concrete.



Rumney Road

Photo showing typical condition of roadway. Pothole repairs are present in many locations.

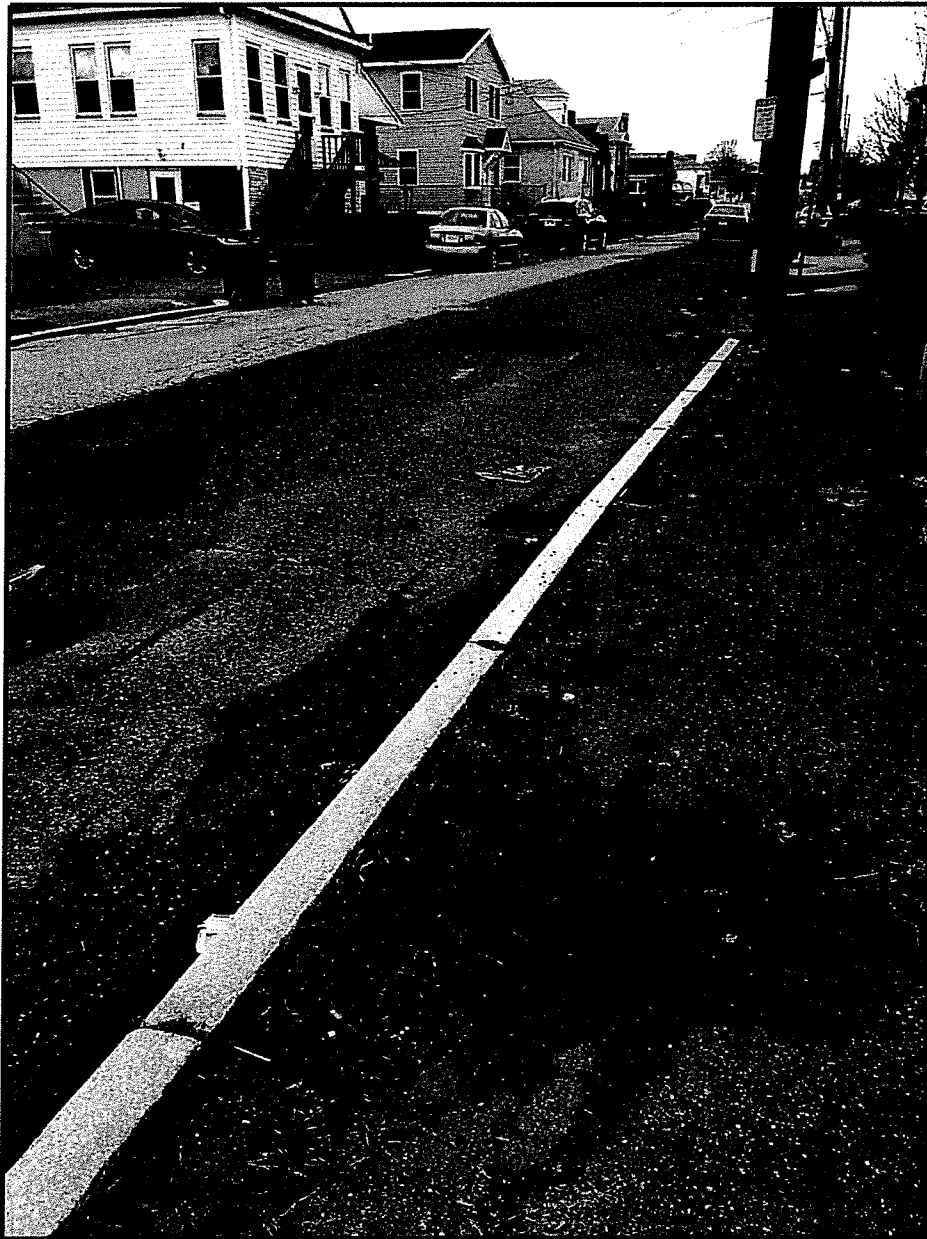


Rumney Road

Near Broadway looking West.

This section of Rumney has granite curb and asphalt sidewalks. Condition of road, curb and sidewalk are poor / very poor.

Where granite curb exists, curb should be reset and sidewalks reconstructed in concrete.



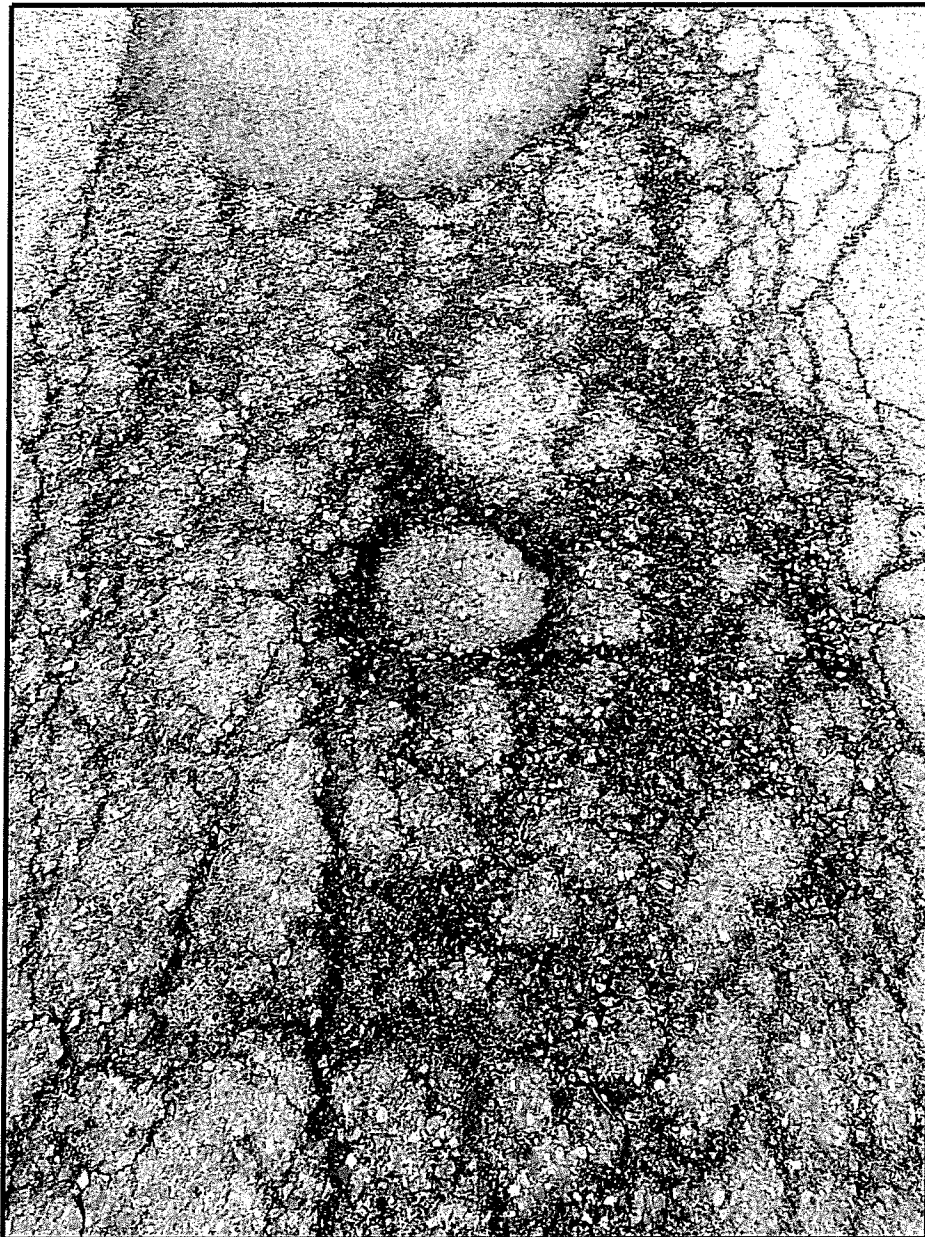
Rumney Road

Photo showing typical condition of roadway. Pothole repairs are present in many locations.



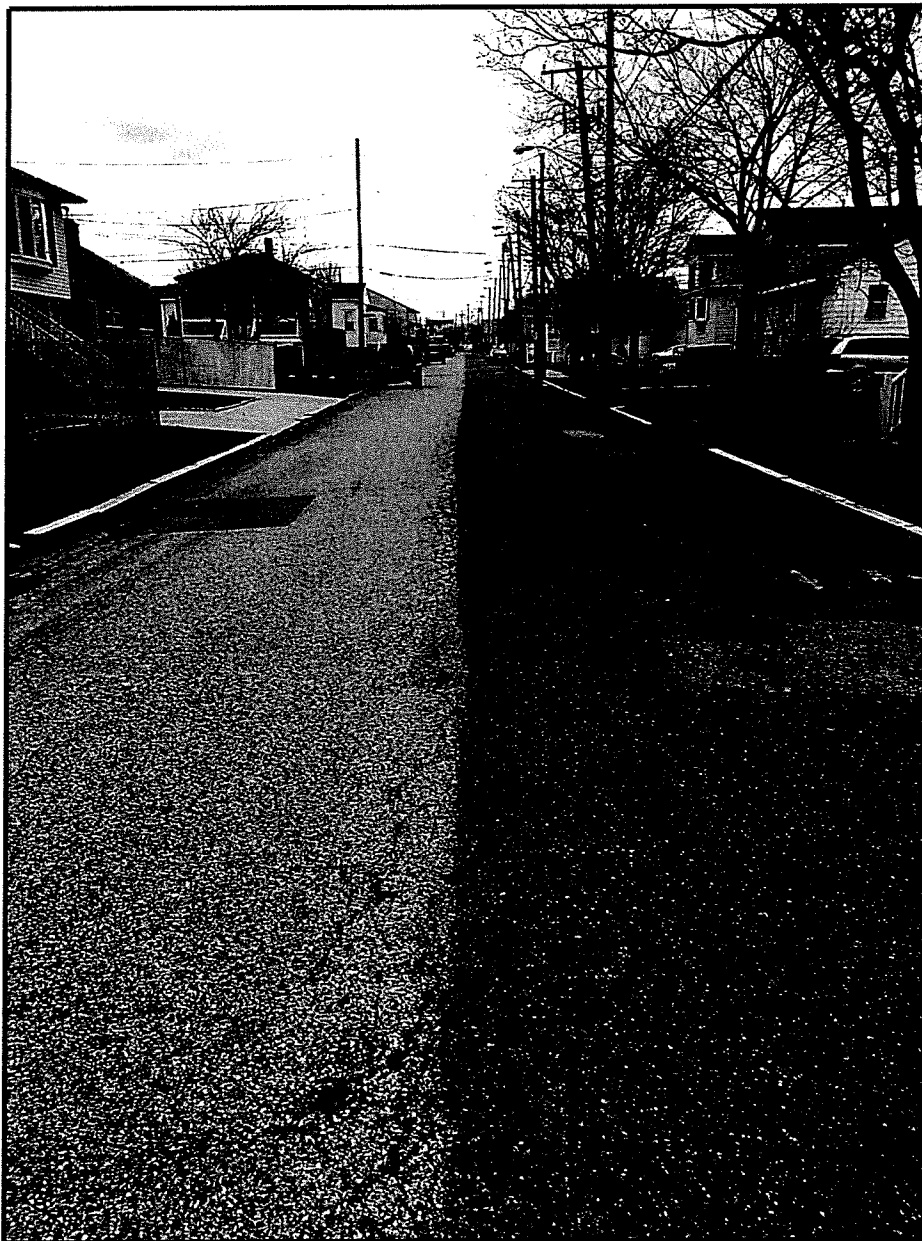
Rumney Road

Zoom in on future pothole repair area.
Multiple layers of asphalt present.



Rumney Road

Moving west, photo at Graves St. Inconsistent sidewalk materials and designs present. Roadway beginning to break apart at center seam. Curbing settled and rolling over.



Rumney Road

At Dawes Street looking west.

Condition of roadway, curbing and sidewalk fairly consistent. Hydrant at next intersection needs to be replaced.

3 hydrants total on Rumney should be replaced ahead of any roadworks.

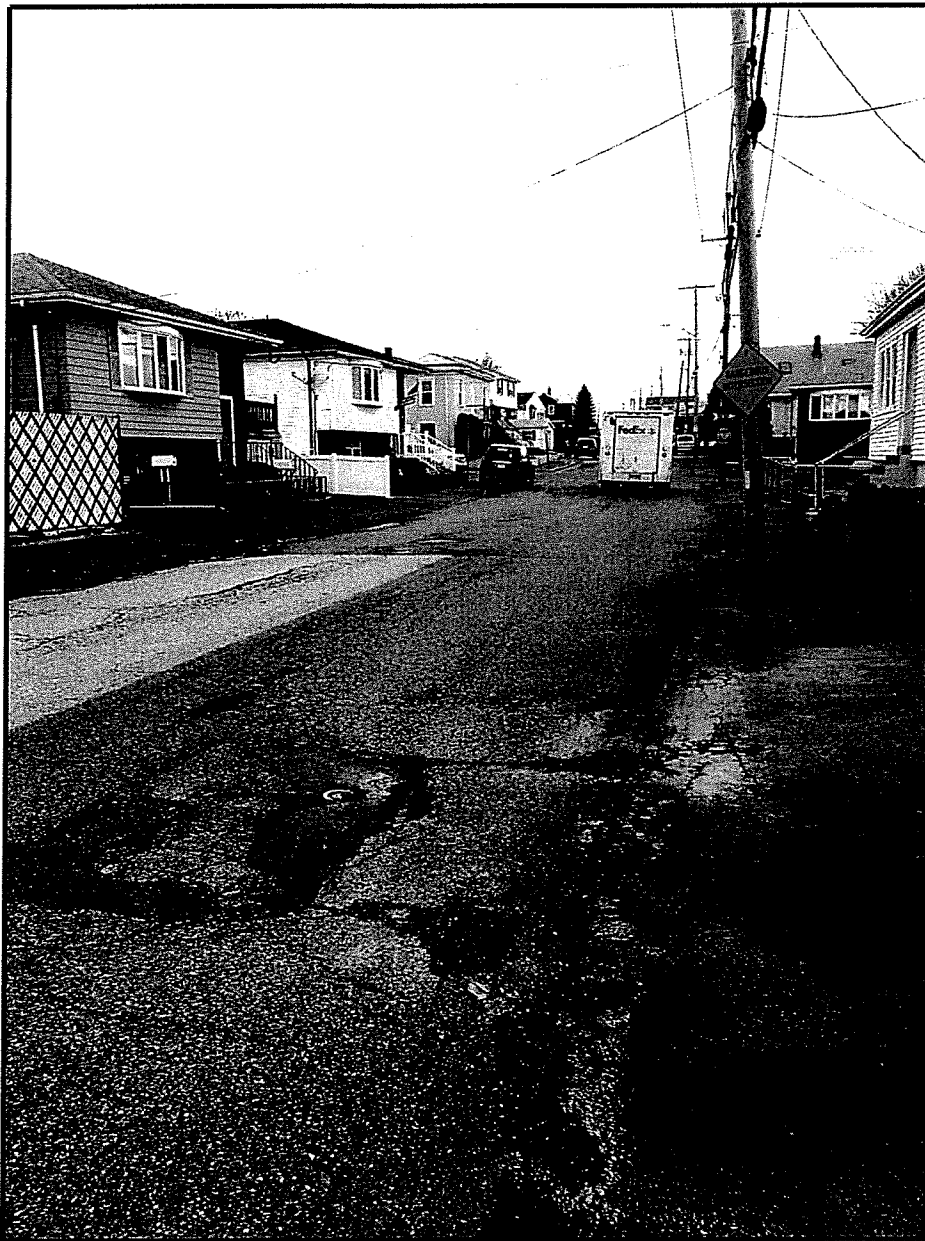


Rumney Road

West of Patriots Parkway looking west towards Larkin St.

West of Patriots Pkwy granite curbing is no longer present. Condition of road and shoulders continues as poor / very poor.

Street as a whole needs to be looked at carefully.



Rumney Road

Zoom in on future pothole repair. Multiple layers of asphalt exist.



Rumney Road

At Larkin St. looking west. One house frontage has concrete curbing installed. Replace concrete with granite. Remainder of block lacks curbing.

Proposed work on Rumney needs to be discussed in detail.



Rumney Road

East of Lantern Rd. looking west.

expansive longitudinal cracking shown, as seam continues to open up pothole repairs will be required.

Inconsistency of sidewalk / shoulder areas continue.



Rumney Road

Photo showing multiple pothole repairs east of Gore Road



Rumney Road

Looking west towards Malden Street.

Roadway in decent condition in this block compared to other sections of the roadway.

